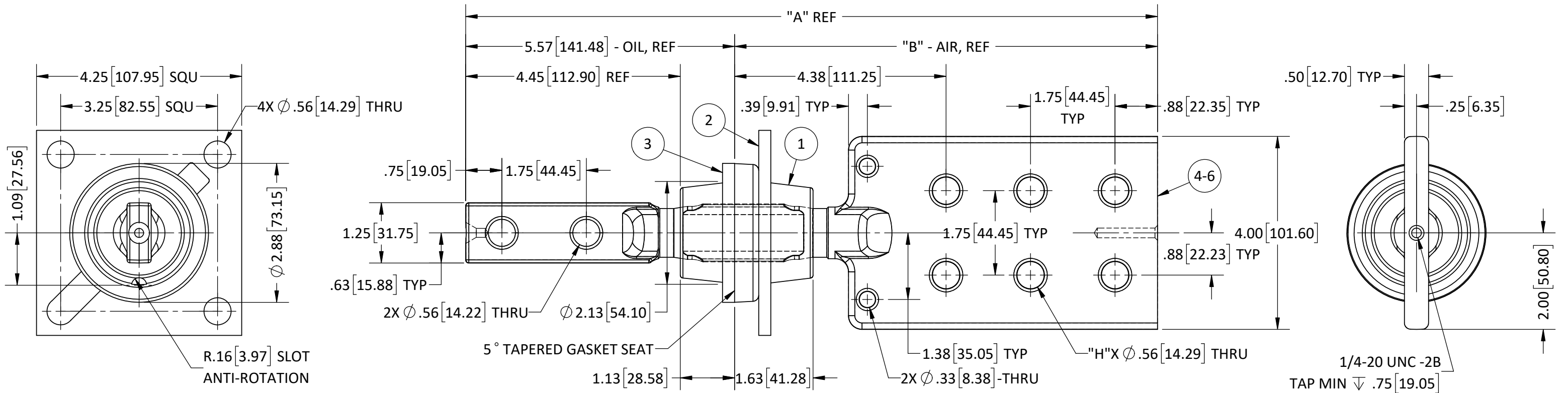
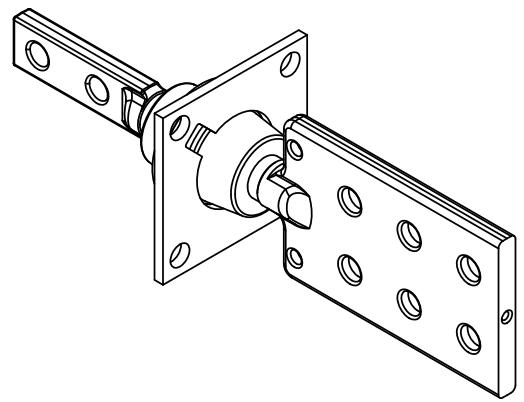


- NOTES:
1. ALL UNSPECIFIED RADII TO BE R0.188
  2. ALL CONTACT SURFACES TO BE CLEAN & FREE FROM FLASH
  3. RATINGS BASED ON SIDE MOUNTED BUSHINGS WITH OIL IMMERSED SHANK AND SUITABLE TERMINATION AND LEAD CONNECTIONS

- MATERIAL:
1. E01 - BISPHENOL-A EPOXY, GREY
  2. IN-LINE SPADE - A356 ALUM - TIN PLATED
  3. ALUMINUM CLAMP

- SPECIFICATIONS:
1. BASIC IMPULSE LEVEL .....30KV BIL
  2. CONTINUOUS CURRENT RATING, ALUM.....1210 AMPS
  3. TEMPERATURE CLASSIFICATION.....-50 °C TO 110 °C
  4. APPROXIMATE WEIGHT .....SEE TABLE

REVISIONS					
REV.	DATE	ECN #	DESCRIPTION	BY	APP'D



ITEM #	QTY	PART #	DESCRIPTION	EPC PART #	DIM "A"	DIM "B"	"H"	WGHT
1	1	10-014-0	BUSHING, BIS-A-EPOXY					(LBS)
2	1	CO-5083-01	EXT ALUMINUM CLAMP					
3	1	GA-0117-00	GASKET, NITRILE BUNA N .25"THK					
4	1	SS-0345-04P	SS, 6H-2H INLINE SPADE LV - ALUM	EPC10-014-501E01T-10	14.33	8.76	6	2.72
5	1	SS-0345-06P	SS, 8H-2H INLINE SPADE LV - ALUM	EPC10-014-502E01T-10	16.08	10.51	8	3.03
6	1	SS-0345-10P	SS, 12H-2H INLINE SPADE LV - ALUM	EPC10-014-504E01T-10	19.58	14.01	12	3.65

THIRD ANGLE PROJECTION

**PROPRIETARY AND CONFIDENTIAL**

THE INFORMATION CONTAINED IN THIS DRAWING IS THE SOLE PROPERTY OF H-J INTERNATIONAL, INC. ANY REPRODUCTION IN PART OR AS A WHOLE WITHOUT THE WRITTEN PERMISSION OF H-J INTERNATIONAL, INC. IS STRICTLY PROHIBITED.

BREAK ALL SHARPS UNLESS OTHERWISE NOTED

**TOLERANCES (EXCEPT AS NOTED)**

TWO PLACE ±.060[1.52]  
 THREE PLACE ±.030[0.76]  
 FRACTIONS ± 1/16"  
 ANGLES ±2°



**H-J INTERNATIONAL, INC.**  
 3010 HIGH RIDGE BLVD, HIGH RIDGE, MO. 63049 USA  
 PHONE 1-636-677-3421 FAX 1-636-376-1915

1.2kV / 1210A  
 LV BUSHING  
 (ALUMINUM CONDUCTOR)

APPROVED BY --- DATE --/--/---  
 CHECKED BY --- DATE --/--/---  
 DRAWN BY TJF DATE 3/28/2018  
 TOOL NO. -  
 PRODUCT GRP. -

DRAWING NO. **10-014-501-10**

SCALE 1:2 SIZE B REV. 0 SHEET 1 OF 1